

# PIONEER PLASTICS

*Anything's Possible*

Pioneer Plastics (Pty) Ltd Co. Reg. No. : 1982/010353/07

## RECOMMENDED DIGESTER THROUGH FLOWS

TOTAL INFLOW INTO THE DIGESTER TANK FROM TOILET, BASIN, BATH, SHOWER, ETC., MUST NOT EXCEED THE LITRE/24 HOURS VALUE GIVEN BELOW FOR THE SYSTEM TO WORK.

IN CASE OF MARGINAL VALUES, RATHER UPGRADE A SIZE OR RUN A SECOND TANK PARALLEL.

### PIONEER DIGESTER TANK

### MAX ALLOWED THROUGH FLOW

HT048 – 1000 LIT

800 LIT / 24 HRS

HT050 – 1700 LIT

1500 LIT / 24 HRS

PA078 – 5000 LIT

4200 LIT / 24 HRS

CISTERN FLUSH

± 10 LIT

MULTIPLY THESE FIGURES

BATH AVERAGE

± 70 LIT

BY THE NUMBER OF PEOPLE

H/BASIN AVERAGE

± 5 LIT

AND BY A TYPICAL REQUENCY  
OF USE PER DAY TO GET TO A

SHOWER

± 40 LIT

“THROUGH FLOW” VALUE.

### TYPICAL APPLICATIONS:

HT048 – FOR HOUSEHOLDS UP TO 4 PEOPLE.

HT050 – FOR HOUSEHOLDS UP TO 7 PEOPLE

PA078 – FOR SCHOOLS, CONVENTION CENTRES ETC., FOR UP TO 80 PEOPLE, I.E. TOILETS & BASIN ONLY.

Telephone: (012) 541 6000 Fax: (012) 541 1738 E-mail: [info@pioneerplastics.co.za](mailto:info@pioneerplastics.co.za)

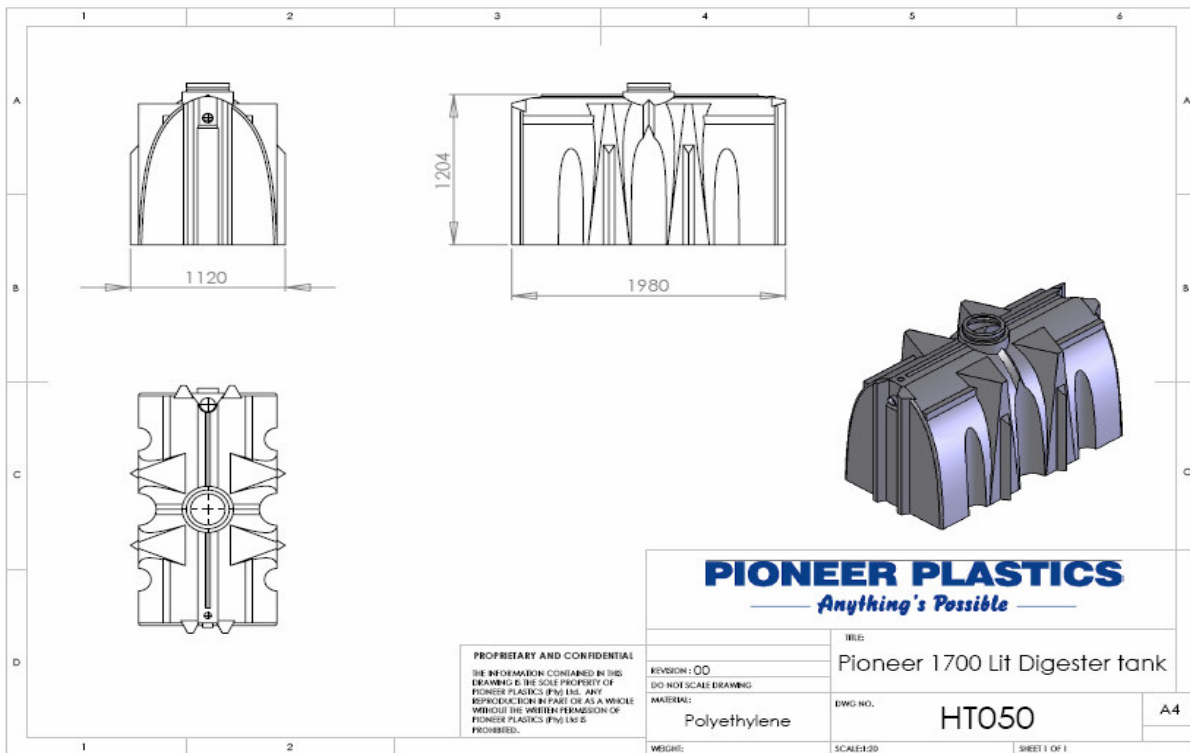
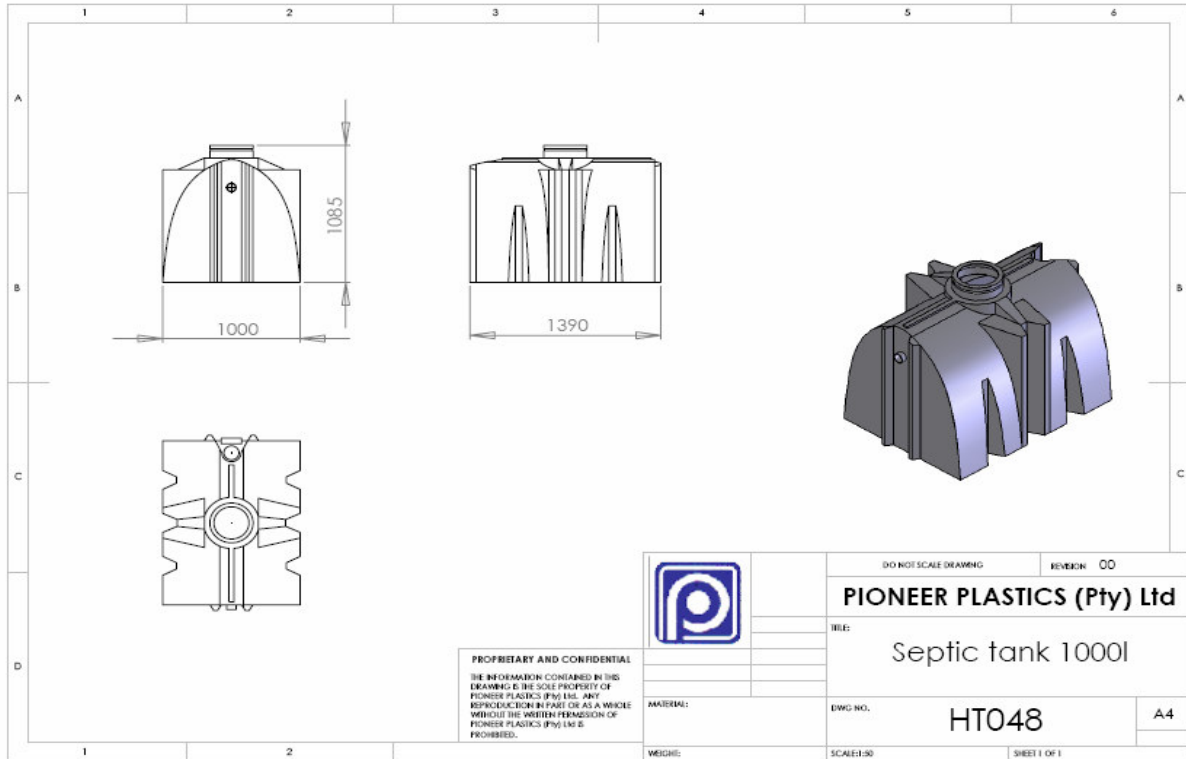
5 Potgieter Street, Rosslyn. PO Box 911-622, Rosslyn 0200 South Africa

Directors: V.S.Wiid, R.J.Hartel, W.H.Wiid

# PIONEER PLASTICS

*Anything's Possible*

Pioneer Plastics (Pty) Ltd Co. Reg. No. : 1982/010353/07



Telephone: (012) 541 6000 Fax: (012) 541 1738 E-mail: [info@pioneerplastics.co.za](mailto:info@pioneerplastics.co.za)

5 Potgieter Street, Rosslyn. PO Box 911-622, Rosslyn 0200 South Africa

Directors: V.S.Wiid, R.J.Hartel, W.H.Wiid

# PIONEER PLASTICS

*Anything's Possible*

Pioneer Plastics (Pty) Ltd Co. Reg. No. : 1982/010353/07

